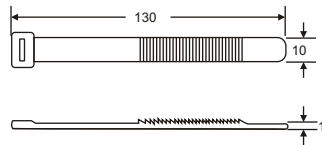
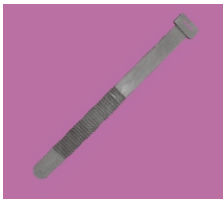


NOVOFLEX AUTO CABLE STRAP

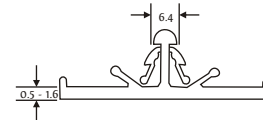


An excellent strap for securing brake wires to bicycle/ motorcycle handles.
Versatile application - can be used anywhere.
Easy to use.
Reusable.
Buckle provided for binding and neat finish.
Standard Colour : Black. Available in other colours subject to minimum order quantity.
Operating Temperature : -25° C to 85° C.

Novoflex Part No.	Length (mm)	Width (mm)	Thickness (mm)	Standard Packing
ASB 130	130	10	1	100 Nos.

Material: LDPE.

NOVOFLEX CABLE HARNESS CLIP

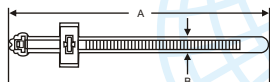


Designed to be taped onto a cable harness and pushed into a chassis/ panel hole.
Standard Colour : Black.
Operating Temperature : -25° C to +85° C.

Novoflex Part No.	Mounting Hole size (mm)	Chassis / Panel Thickness (mm)	Standard Packing
HC1 (P)	6.4	0.5 - 1.6	100 Nos.

Material: Polyamide.

NOVOFLEX CABLE BAND

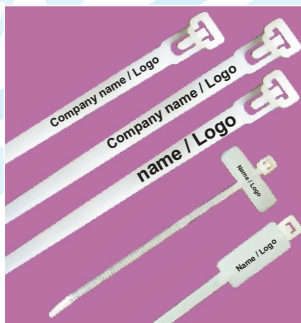


An excellent bunching solution for automobile harness.
Snap fits on chassis/panel hole. Labour saving.
Standard Colour : Black.
Operating Temperature : -25° C to +85° C.

Novoflex Part No.	Dimensions			Panel Thickness (mm)	Standard Packing
	A (mm)	B (mm)	Hole Dia (mm)		
CB 150	150	7.9	6.4	0.5-1.6	100 Nos

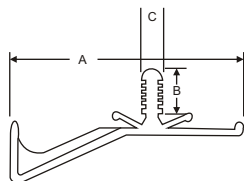
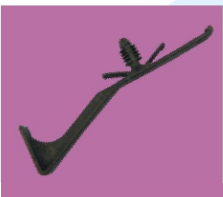
Material: Polyamide.

NOVOFLEX NYLON CABLE BINDERS



Nylon Cable Binders. Manufactured from High Strength Engineering Nylon 6,6 material and is suitable for binding, fixing all types of auto cables to the chassis / pipes in the automobile.
Standard Colour: Weather Resistant Black and Natural White.
Operating Temperature : -25° C to 85°C.

NOVOFLEX SCREW CLIP



Wire harness clip.
Press fit into 7.7 mm hole dia.
Panel thickness - 0.5-5-2.0 mm.
Standard Colour : Natural White.
Operating Temperature : -25° C to +85° C.

Novoflex Part No.	Dimensions			Standard Packing
	A (mm)	B (mm)	Hole Dia C (mm)	
HC 2(S)	90	12	7.7	100 Nos.

Material: Polyamide.

Novoflex Part No.	Length (mm)	Width (mm)	Standard Packing
CPS - 100 ES	100	2.5	100 Nos.
CP - 160 ES	160	4.7	100 Nos.
CP - 200 ES	200	4.7	100 Nos.
CP - 250 ES	250	4.7	100 Nos.
CPS - 300 ES	300	4.7	100 Nos.
CP - 300 ES	300	7.6	100 Nos.
CPS - 368 ES	368	4.7	100 Nos.
CP - 380 ES	380	7.6	100 Nos.
CP - 450 ES	450	7.6	100 Nos.
CP - 550 ES	550	9.0	100 Nos.
CP - 610 ES	610	9.0	100 Nos.
CP - 750 ES	750	9.0	100 Nos.
CP - 920 ES	920	9.0	100 Nos.

Material: Nylon 6.6