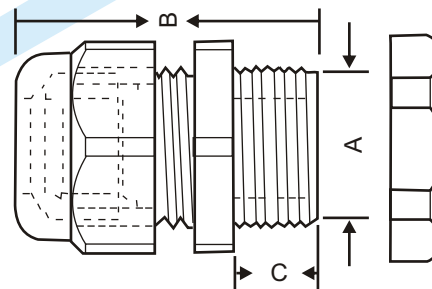
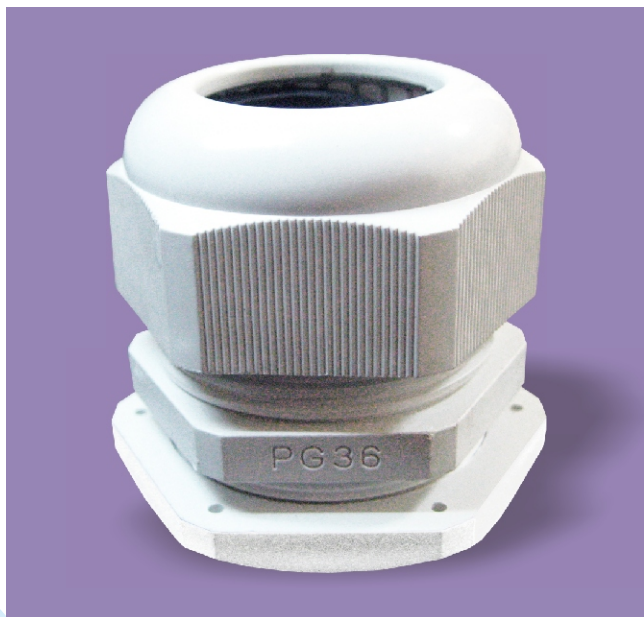


NOVOFLEX MG METRIC THREAD CABLE GLAND



NOVOFLEX PG THREAD CABLE GLAND



TECHNICAL DATA

- Suitable for unarmoured, Plastic insulated cables
- Operating Temperature : -25° C to +85° C
- Deflection temperature under load at 66 psi 151° C
- Tensile strength 595 Kg/cm²
- Volume resistivity 1.5 x 10¹² ohm-cm
- Automatic Centering & Fixing
- Corrosion resistant
- Vibration Proof
- Indoor or Outdoor use
- Minimum Assembly time
- Non-Magnetic, non-conductive
- Economically Priced
- Compact Streamline Construction
- Maximum Cable Diameters
- Wide range of cable Diameters
- Impact Resistant
- High stability
- Resistant to Salt water, gasoline, alcohol, oil, grease, easter keyton eather, benzine, common solvent, weak acids & weak alkalis
- High Tensile Strength
- Self Extinguishing
- Self lubricating
- Material : Polyamide 6 (Nylon 6).
- Colour : Black / Light Grey.

MG METRIC CABLE GLAND					
Novoflex Part No.	Entry Thread Metric (mm)	Mounting Hole Dia (mm)	Cable Sealing Range (mm)		Standard Packing
			Min.	Max.	
MG 12	M12 x 1.25	12.5	3	6.5	100 Nos.
MG 16	M16 x 1.5	16.5	5	10	100 Nos.
MG 20	M20 x 1.5	20.5	9	14	100 Nos.
MG 25	M25 x 1.5	25.5	13	18	100 Nos.
MG 32	M32 x 1.5	33	18	25	100 Nos.
MG 40	M40 x 1.5	41	22	32	100 Nos.

PG THREAD CABLE GLANDS					
Novoflex Gland Part No.	Panel Hole Dia (mm) A	Overall Length (mm) B	Thread Length (mm) C	Sealing Range (mm)	
				Min.	Max.
PG - 7	12.0	29	8.3	3.5	6
PG - 9	16.0	33	8.7	4	8
PG -11	18.0	37	9	5	10
PG -13.5	20.5	40	10	6	12
PG -16	22.5	42	11	10	14
PG - 21	27.5	48	11	13	18
PG - 29	36	57	11	18	25
PG - 36	47	64	15	20	32

• Water Tight • Easy Assembly • Good Strain Relief • Wide Clamping Range • Multi Purpose Application.