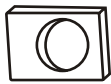
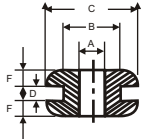


NOVOFLEX FLEXIGUARD GROMMET RING



These Grommet rings are designed to simply snap into holes and protect wires and cable cords against damage from sharp edges. These flexible rings, made from special purpose PVC also insulate holes in steel sheets and offer superior resistance against fluids, mineral oils, aromatic fuels, vegetable oils, ozone and ageing. Standard Colour : Black
Operating Temperature : -20°C to +70°C.



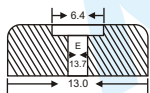
Novoflex Part No.	Cable Dia A (mm)	Panel Hole Dia B (mm)	Grommet Outer Dia C (mm)	Panel Sheet Thickness D (mm)	F (mm)	Standard Packing
GR 05	2.5	6.5	8.0	1.5	1.5	100 Nos.
GR 06	4	6.4	9.6	1.6	1.8	100 Nos.
GR 08	5.5	8	11	2.0	2.0	100 Nos.
GR 10	6	10	13	1.6	1.8	100 Nos.
GR 11	6.0	10.0	12	3.2	2.0	100 Nos.
GR 13	8	13	16	1.6	2.4	100 Nos.
GR 13A	9.5	13	17	1.8	2.9	100 Nos.
GR 16	11	16	19	1.6	2.4	100 Nos.
GR 20	13	20	25	1.6	2.4	100 Nos.
GR 25	22	25	32	1.6	3.2	100 Nos.
GR 30	27	30	46	3.2	2.0	100 Nos.

Material: Special Purpose soft PVC.

NOVOFLEX BUMPER FEET



Bumper feet are attached to wide variety of appliances and table top products to protect surfaces and give added manoeuvrability. They do not skid or scratch and offer a high degree of protection for both product and location. They are fixed by means of screw or bolt-nuts or rivets. Standard Colour : Black
Operating Temperature : -20°C to +70°C.



Novoflex Part No.	Standard Packing
BF 01	100 Nos.

Material: Special Purpose soft PVC.

NOVOFLEX OPEN CLOSE BUSHING



Open / Close Bushings are designed to insulate and isolate electric or communication cables as well as RPM shafts and pull out rods. Its split design allows side entry and encirclement of pre-assembled harnesses, capillary tubes or other assemblies that have segments larger than the bushing's ID. Operating Temperature : -20°C to +85°C.



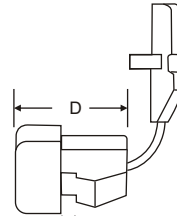
Novoflex Part No.	A (mm)	B (mm)	C (mm)	Standard Packing
OCB - 104	18.0	10.4	10.5	100 Nos.
OCB - 175	24.6	17.5	5.6	100 Nos.

Material: Polyamide

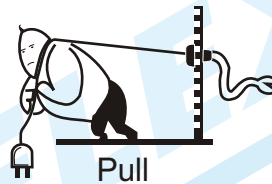
NOVOFLEX STRAIN RELIEF CORD BUSHING



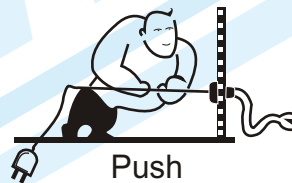
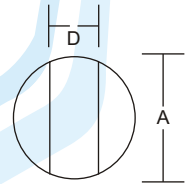
They are designed to protect the life line of electrical / electronic appliances and equipments, machine tools by absorbing twist, pull, push and flex on power supply cords. They are installed easily by squeezing cord bushings on power cables and pushing it into the hole at chassis entry point, and securely anchoring, insulating and protecting cords. These eliminate the need to tie or knot cords and the product. Standard Colour : Black.
Operating Temperature : -20°C to +85°C



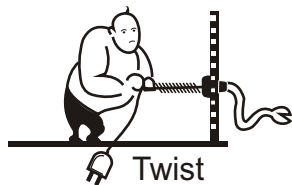
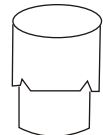
Maximum Chassis Thickness- Part additional clearance



Pull



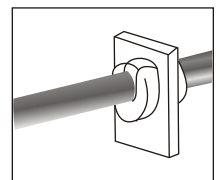
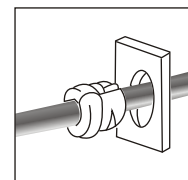
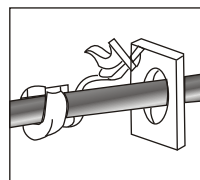
Push



Twist



Position on Wire **Squeeze with Pliers** **Push into Hole**



Cable Shape	Part No.	App. Wire Dia (mm)	Hole Diameter A (mm)	Hole Diameter B (mm) To prevent rotation	Chassis Thickness	Part Length D (mm)	Standard Packing
Flat	SBF 21	2.3 X 4.5	9.5	8.7	0.5 - 1.6	10.3	100 Nos.
		2.8 X 4.5	9.5	8.7	0.5 - 1.6	10.3	100 Nos.
	SBF 32	3.0 X 5.6	11	9.9	1.8 - 2.5	10.5	100 Nos.
	SBF 4	3.0 X 7.1	12.7/13.1	11.8	1.8 - 2.5	12.7	100 Nos.
		3.8 X 7.6	12.7/13.1	11.8	1.8 - 2.5	12.7	100 Nos.
Round	SBR 51	6.4 - 7.4	12.7/13.1	11.5	0.5 - 1.6	11.2	100 Nos.
		6.4 - 7.4	12.7/13.1	11.5	1.8 - 2.5	11.2	100 Nos.
	SBR 62	7.4 - 8.2	15.9/17.4	14.0	1.9 - 3.2	14.8	100 Nos.
	SBR 71	8.2 - 9.4	15.9/17.4	14.0	1.9 - 3.2	14.8	100 Nos.
	SBR 72	8.2 - 11.0	19.0/19.8	16.5	1.9 - 3.2	19.0	100 Nos.
	SBR 82	12.0 - 15.2	22.2	21.3	1.9 - 3.2	20.0	100 Nos.

Material: Polyamide.