

Edge Saddles



Novoflex Edge Saddles are designed for cable fitments and protection from the edges/corners of the panels. The flexible wings on the opening of the saddle allow for easy entry of the cables into the saddle but prevent the cables from coming out.

Material: Nylon 6. Resistant to Fungus, Corrosion, and most mild acids.

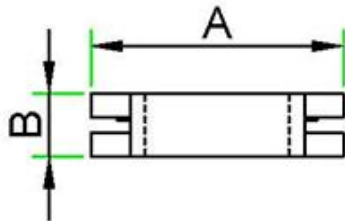
Flammability Rating: UL94 V-2

Standard Colour: Natural White.

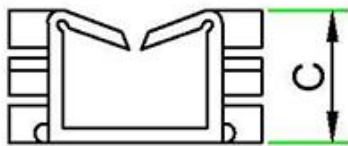
Operating Temperature: -25° C to +85° C.

Storage Conditions: To be stored in a cool, dark, dry place away from sunlight in a sealed condition.

Example Applications: Automobiles, Railways, Aviation, Ship Building, Telecom, Consumer Durables, Computers & Networking, Electric Metering, Electronics, Control Panels.



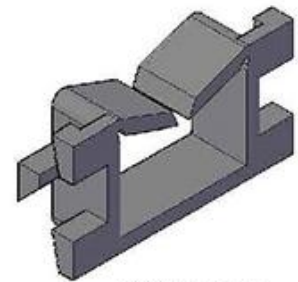
TOP VIEW



FRONT VIEW



SIDE VIEW



ISOMETRIC VIEW

NOVOFLEX - Edge Saddles

Novoflex Part No.	Length (A) - mm	Width (B) - mm	Height (C) - mm	Panel Thickness - mm	Standard Packing (Nos.)
EDS 12	20	5	10.5	1.2 - 1.6	100

