

Tear Drop Board Supports



Novoflex Tear Drop Board Supports has a teardrop style nose that simplifies insertion and provides increased holding power. It can snap into 2.5 mm diameter hole of up to 1.6 mm thick board.

Material: **Nylon 6 (Polyamide)**. Resistant to Fungus, Corrosion, and most mild acids.

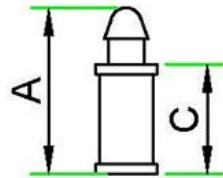
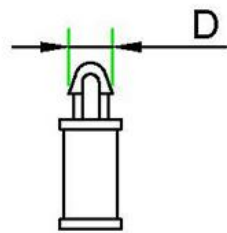
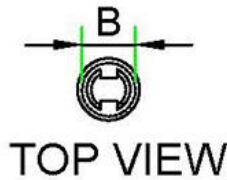
Flammability Rating: **UL94 V-2**

Standard Colour: Natural White.

Continuous Operating Temperature: -25° C to +85° C

Storage Conditions: To be stored in a cool, dark, dry place away from sunlight in a sealed condition.

Example Applications: Automobiles, Railways, Aviation, Power Plants, Telecom, Consumer Durables, Retail Stores, Electric Metering, Electronics, Control Panels and many more.



NOVOFLEX - Tear Drop Board Supports

Novoflex Part No.	Length (A) - mm	Width (B) - mm	Spacing Length (C) - mm	Push Hole Dia (D) - mm	Chassis Thickness - mm	Standard Packing (Nos.)
PSTE 79	11.8	3.8	8	2.5	1.6	100