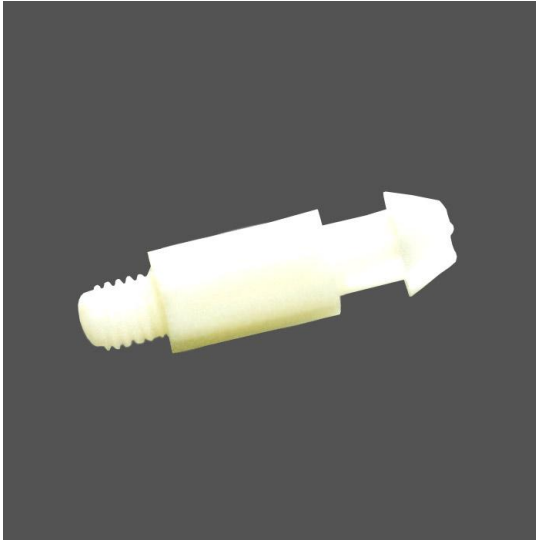


### Top Split PCB Supports



Novoflex Top Split PCB Supports is designed to allow for easy removal and facilitate repairs. The larger base provides easy identification of mounting end. The support is installed easily by hand and no tool, screw, bolt or nut is required for mounting.

**Material:** Nylon 6 (Polyamide). Resistant to Fungus, Corrosion, and most mild acids.

**Tolerance:** ± 0.50 mm.

**Flammability Rating:** UL94 V-2

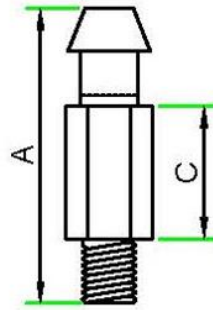
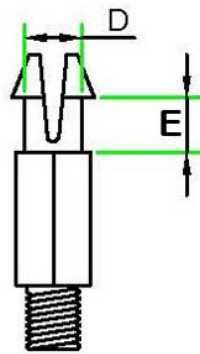
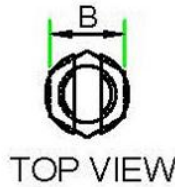
**Standard Colour:** Natural White.

**Continuous Operating Temperature:** -25° C to +85° C

**Intermittent Operating Temperature:** +115° C.

**Storage Conditions:** To be stored in a cool, dark, dry place away from sunlight in a sealed condition.

**Example Applications:** Automobiles, Railways, Aviation, Power Plants, Telecom, Consumer Durables, Electric Metering, Electronics, Control Panels and many more.



NOVOFLEX - Top Split PCB Supports						
Novoflex Part No.	Length (A) - mm	Width (B) - mm	Spacing Length (C) - mm	Push Hole Dia (D) - mm	Chassis Thickness (E) - mm	Standard Packing (Nos.)
PCB 124	27.5	7	12.4	5.3	5.1	100

