

Fir Tree Push Clamp



Novoflex Fir Tree Mount Push Clamp are uniquely designed to secure cables and corrugated conduits or pipes to a panel or chassis without the need of any fixing tools. The clip is mounted by pushing the anchor head securely through the hole/fixing point thereby providing a solid, rattle-free installation. The clip is most suited for use with threaded holes as each stepped serration of the clip provides additional strength to the entire setup. The Fir Tree locking system is designed to provide strong retention forces between the clamp and the chassis. The design also allows for installation on a variety of panel thicknesses with low insertion and high extraction forces, as well as helps absorb any additional external stresses on the cables and pipes.

Material: **UL Listed Nylon 6.6.** Resistant to Fungus, Corrosion, and most mild acids. Can also be manufactured in HSB, HTR, FR materials or customer specific colours specific to MOQ.

Flammability Rating: **UL94 V2.**

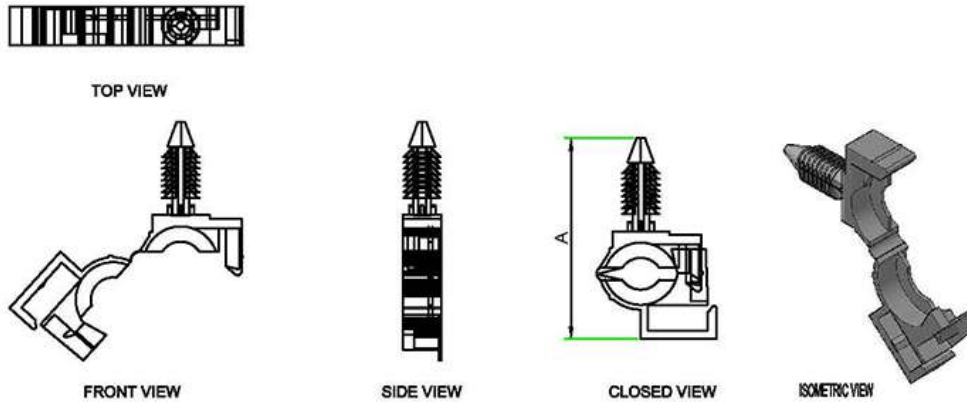
Standard Colour: **UV Resistant Black (B).**

Operating Temperature: **-25° C to +85° C.**

Halogen Free: **Yes.**

Storage Conditions: To be stored in a cool, dark, dry place away from sunlight in a sealed condition.

Example Applications: Wiring Harness, Automotive, 2 Wheelers, Aviation, Commercial Vehicles, Control Panels and Heavy Equipment manufacturing industries.



NOVOFLEX - Fir Tree Push Clamp

Novoflex Part No.	Length (A) - mm	Panel Thickness - mm	Push Hole Dia - mm	Max Cable / Pipe Dia - mm	Standard Packing (Nos.)
FTC 01	41	0.7 - 12	8.6	8	100